



Sudety Cup

25-28.07.2024

Bulletin 1

sudetycup.pl



CZARNA GÓRA RESORT



CZARNA GÓRA RESORT

In winter one of the best
ski resorts in Poland.

In summer - a mountain of sports possibilities.
For 365 days a year in the Clean Air Zone.

**TU ZACZYNA SIĘ
PRZYGODA!**

25-28.07.2024

**Sudety
Cup**

sudetycup.pl

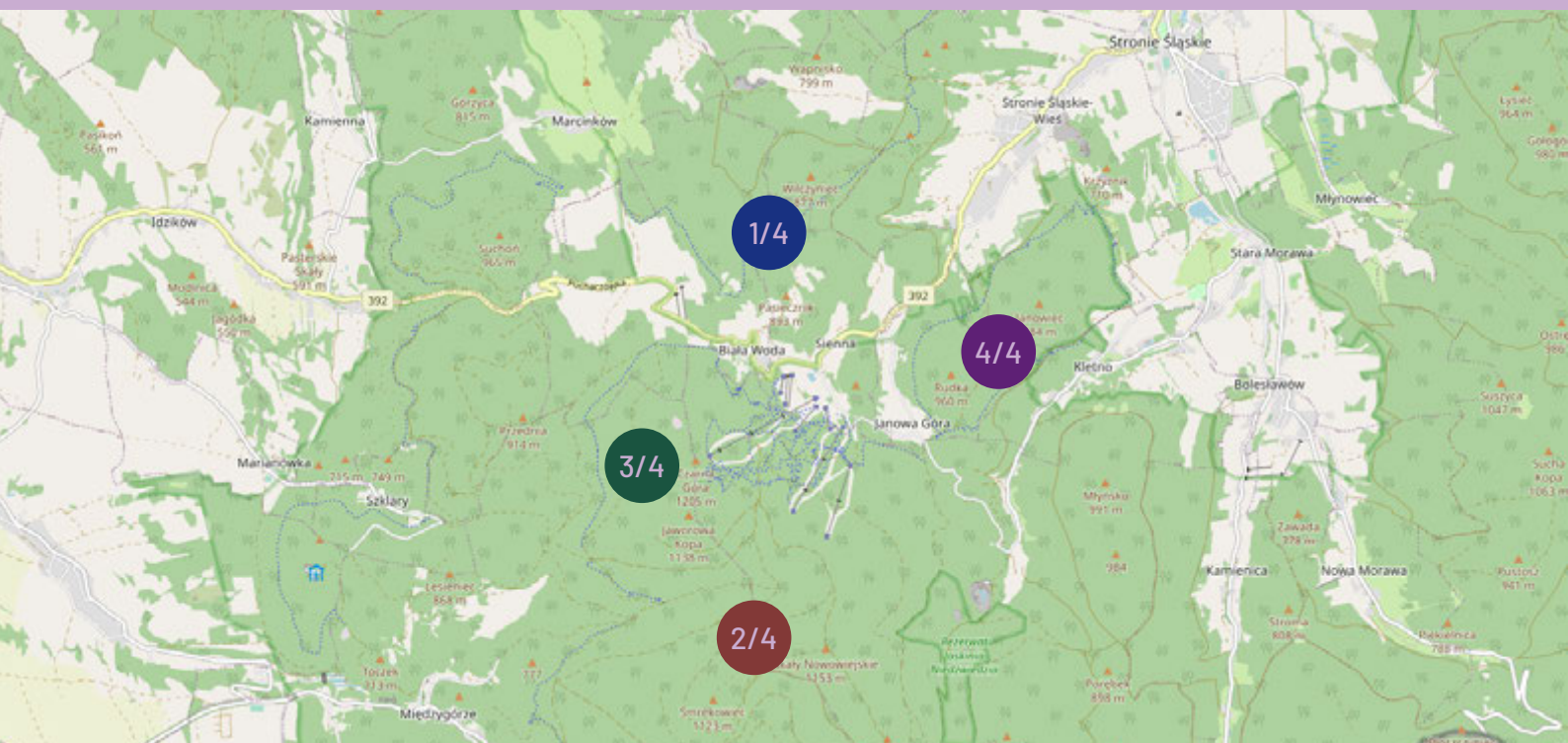


Abstract

In the upcoming fourth edition of Sudety Cup we would like to climb two peaks - the first is the perfect event organization, while the second one is to enable you to conquer Czarna Góra 1205 m above sea level. As running at such altitude is quite a challenge, achieving perfection in organizing an orienteering event is not the easiest thing to do. However, we are convinced that we will be well prepared for this climb and we will provide you with an absolutely compact competition formula. All stages

will have one Event Center with a convenient car parking located at your fingertips. What is more, we do not forget about the issues that are most important in orienteering - picturesque and unique terrains. It is supposed to be an unforgettable experience in the rhythm of **#SlowEvent** - do not wait, register even today!

- Wojtek Dwojak and Jacek Morawski



25-28.07.2024

Sudety
Cup

sudetycup.pl



1/4

Pasiecznik

middle distance
25.07.2024

2/4

Żmijowiec

long distance
26.07.2024

3/4

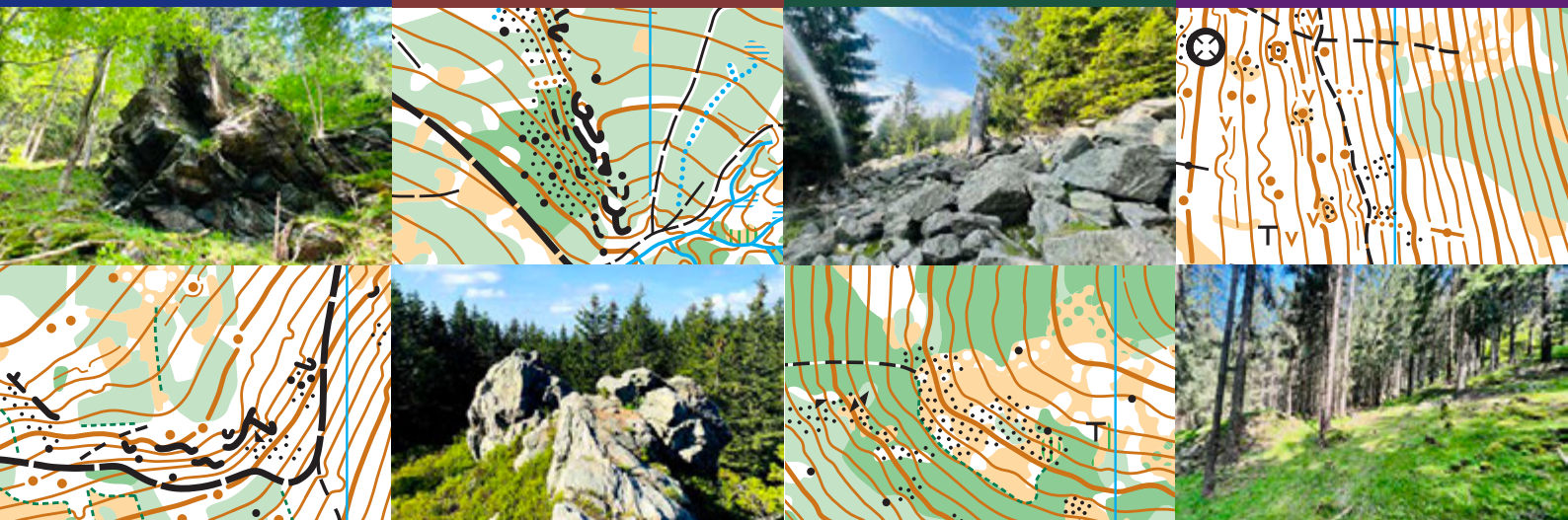
Czarna Góra

middle distance
27.07.2024

4/4

Janowa Góra

chasing start
28.07.2024



Organizer

Dolnośląski Związek Orientacji Sportowej
ul. Borowska 1-3
50-529 Wrocław, Poland
sudety@sudetycup.pl

Co-organizer

Fundacja Slow Event
ul. Lindleya 16
02-013 Warszawa, Poland

Organizing committee

Event Director
Main Referee
IOF Adviser/Controller
Start
SPORTident
Cartography

Wojciech Dwojak
Jacek Morawski
Tadeusz Piłkowski
Arleta Sosenko
Marcin Leśnicki
Wojciech Dwojak, Jacek Morawski

Partners

International Orienteering Federation
Polish Orienteering Association
Stronie Śląskie
State Forests
Forest Inspectorate Łądek Zdrój
Forest Inspectorate Międzyzlesie



Event rank

4-stage individual national ranking event, KM21E classes with WRE status during stage 3.

25-28.07.2024



sudetycup.pl



1/4

Pasiecznik

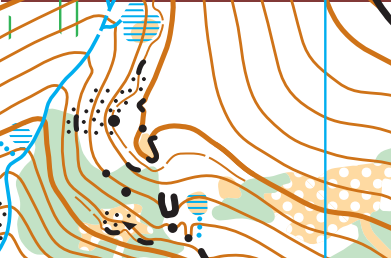
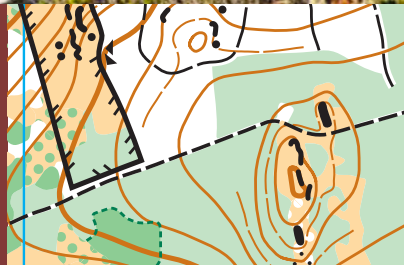
middle distance
25.07.2024



2/4

Zmijowiec

long distance
26.07.2024



Program

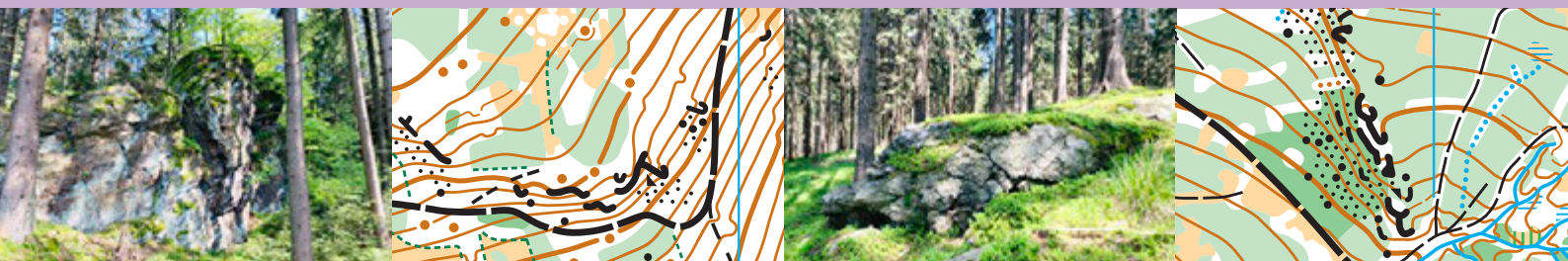
15:00 first start
20:00 finish closing

Program

11:00 first start
16:00 finish closing

We start the 2024 edition with a fast stage in the terrain typical of the forested hills of the Śnieżnik Massif. The start will be located in a breathtaking place which will assure you that coming to Sudety Cup was the best possible decision. The area of the first stage is not only a spruce forest with excellent running and visibility, but also an ocean of knolls where you will certainly be able to sail - remember that the control point may be hidden behind each of them. Let us add some boulders and rocks to all above and we will get the perfect recipe for a **fast** and **technical** opening of the event.

The second stage will be varied. Start will be located 1000m above sea level and you will get there using extra-fast Luxtorpeda chairlift. You will have a chance to compete on a demanding plateau with varying runnability and complicated rock formations where accurate map reading will be crucial. We will also offer you a lot of legs on steep slopes. Here, a moment of inattention will cost you additional painful meters of climbing. All this right by the top of Śnieżnik Mountain. Who knows, maybe if you are lucky, you will see some mountain chamois there? In a word - the second stage will be **picturesque** and **intense**.



25-28.07.2024

Sudety
Cup

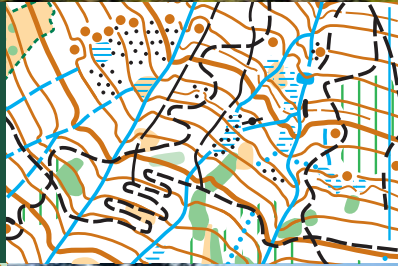
sudetycup.pl



3/4

Czarna Góra

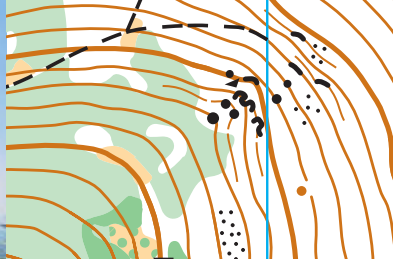
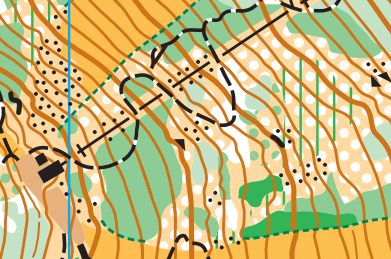
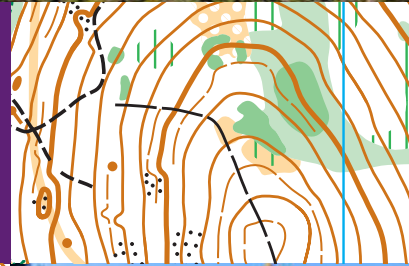
middle distance
27.07.2024



4/4

Janowa Góra

chasing start
28.07.2024



Program

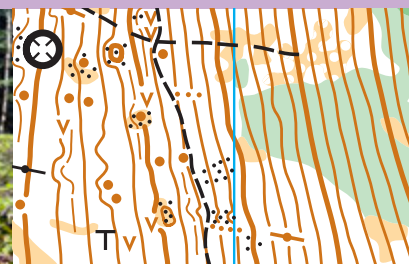
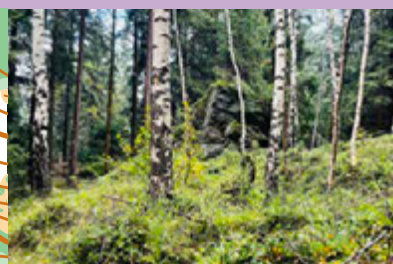
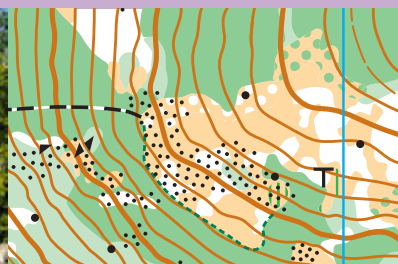
11:00 first start
15:00 finish closing

Program

10:00 first start
14:00 finish closing

During the third stage you will have the opportunity to race at a highest altitude as for Polish conditions - 1200 m above sea level. This is where the most difficult terrain and the most technically demanding courses await you. You will run through boulder fields covered by mountain pine, steep slopes with varied vegetation, rich in marshes and numerous point features. We are preparing a truly royal stage in **alpine** and sometimes **extreme** terrain that will feature World Ranking Event status for the elite classes. Just like during the second stage - the reliable Luxtorpeda chairlift will take you to the start.

The fourth stage is fast running filled with sports emotions just like every chasing start is. Cool head and the ability to choose the best route choice will certainly be useful in the fight for the title of Sudety Cup winner. In addition, you have to be prepared for significant climbs throughout the course, as well as careful orienteering in the post-mining areas with large number of pits and knolls. During the last race of Sudety Cup expect a **route choice-demanding**, but also **vigilant** terrain that will require strength in your legs and focus on the map at the right moments.



25-28.07.2024



sudetycup.pl



Location

Event Center for all four stages will be located in Czarna Góra Resort Ski Area in Sienna. We will provide you with a convenient and free car parking in the immediate vicinity of Event Center (maximum distance 200 m).

Kid's zone

There will be Kid's zone with attractions for the youngest organized at each stage at the Event Center. Also, a special Miniknat course for children located next to the Event Center will be available. Both Kid's zone and Miniknat will be free of charge and available to all willing children without prior registration.

Luxtorpeda

When getting to the start of the 2nd and 3rd stage, you will ride the extra-fast Luxtorpeda chairlift to the very top of Czarna Góra, 1205 m above sea level. You will not only do more than 360 m of climb in three minutes thanks to this ride, but also you will observe amazing views of the Śnieżnik Massif and the surroundings of Stronie Śląskie.

WRE

3rd stage in KM21E classes will be a World Ranking Event race. KM21E competitors who want to be classified within the WRE during this stage, in addition to submitting the standard registration via the Polish Orienteering Association system, must also register for this race via IOF Eventor by **15.07.2024**:
<https://eventor.orienteering.org/Events>





Entries

The deadline for all entries is **15.07.2024** or (if earlier) reaching the participant limit. Entries are to be made via Polish Orienteering Association entry system: <https://orienteering.org.pl/pzos/entries>

Participant limit

Limit of event participants is set at **999** athletes. After reaching the limit entries will be closed and registration of additional athletes will be possible only in the case of withdrawal of athletes entered within the limit.

Cancellations

It is possible to modify your entry details free of charge (including its cancellation) until **15.07.2024**. In case of entry cancellation after 15.07.2024 we do not provide any refund.

Sport classes

KM10, KM12, KM14, KM16, KM18, KM20, KM21, KM21E, KM35, KM40, KM45, KM50, KM55, KM60, KM65, KM70, KM75, KM80, KM85, KM90 (K for women, M for men)

The organizer reserves the right to combine classes in case of small number of entries.



Open classes

	Distance	Difficulty	Description
Rodzinna	1,5-2,0 km	easy	marked course for families (group/family participants)
Enka	1,5-2,0 km	easy	marked course for children (individual participants)
Krótka	2,0-3,0 km	easy	easy course for beginners who do not need marked course
Średnia	3,0-4,0 km	medium	for those who already have some orienteering experience
Challenge	2,5-3,5 km	difficult	short but technically demanding course for challengers
Ultra	3,0-5,0 km	difficult	technically demanding course for fans of orienteering adventures

There is no start time assignment for open classes, you can start at any time during two hours and thirty minutes of the start time (00-150').



Fees

	KM10-14 Rodzinna Enka	KM16-20 KM65 and older Krótka Średnia	KM21-60 Challenge Ultra
1st deadline 30.04.2024	20 PLN / stage 80 PLN / 4 stages	35 PLN / stage 140 PLN / 4 stages	50 PLN / stage 200 PLN / 4 stages
2nd deadline 15.07.2024	25 PLN / stage 100 PLN / 4 stages	40 PLN / stage 160 PLN / 4 stages	60 PLN / stage 240 PLN / 4 stages
late entry	30 PLN / stage 120 PLN / 4 stages	45 PLN / stage 180 PLN / 4 stages	70 PLN / stage 280 PLN / 4 stages

Entry fee includes two rides with Luxtorpeda chairlift to the top of Czarna Góra on the way to the start of 2nd and 3rd stage.

Payments

Dolnośląski Związek Orientacji Sportowej
ul. Borowska 1-3
50-529 Wrocław
Poland
IBAN : **PL87116022020000000230177716**
SWIFT: **BIGBPLPW**

Please include participant details (name and club) and "Sudety" word in bank transfer description.

The validity of the entry within a given deadline is determined by entry fee payment to the organizer's account, not by the fact of just registering an entry via entry system.

We allow payments also in Koruna česká (CZK) and Euro (EUR). Please find all entry fees and payment details on our website and choose the preferred currency.



Punching system

SPORTident system will be used for punching during the event. The stations will operate in AIR+ mode.

It is possible to rent a SPORTident card from the organizer for 5 PLN / stage. Please submit your request by e-mail (sudety@sudetycup.pl) by 15.07.2024.

Environment sustainability

Respecting the surrounding nature is extremely important, therefore during the competition we will try to reduce the negative impact of our event on the environment as much as possible - we will replace plastic with paper products where possible. You can also help us with this - bring your own reusable cups for water at the finish line.

Maps

All maps prepared according to ISOM 2017-2. Digital print, sealed in plastic bags.

1:10 000, e-5 m for KM10-45, Średnia, Challenge, Ultra
1:7 500, e-5 m for KM50-90, Rodzinna, Enka, Krótka

Start time requirements

We give you the opportunity to specify any needs of individually adjusted the start time at one or more stages which may be useful i.e. in case of child care. More details can be found at sudetycup.pl.

Stage classification

We introduce stage classification where winners of stages 1-3 of all classes will receive special awards.

Prize

Gifts and diplomas for the TOP3 participants in each class in the general classification after four stages will be awarded.

Additional information

- The organizer provides medical care during the event.
- The organizer has a valid third party insurance.
- The organizer is not responsible for individual insurance of the participants.
- The organizer is not financially responsible for any items lost during the event.
- The organizer reserves the right to change the event program, as well as to cancel the event due to force majeure.

- The organizer reserves the right to the final interpretation of this Bulletin.
- By registering for the event you consent to the publication of your image on the website sudetycup.pl, in the organizer's social media and in other promotional materials.
- By registering for the event you accept this Bulletin.
- Further information about the event can be found at sudetycup.pl.

WRE Appendix



Training opportunities

Free training maps from previous editions of Sudety Cup are available on our website:
<https://sudetycup.pl/en/maps/>
More information about other training opportunities will be published later at sudetycup.pl.

Accommodation and food

Variety of accommodation options will be available at sudetycup.pl. Apart from this there are numerous accommodation facilities in the nearby area.
Few restaurants will be available in the immediate vicinity of the Event Center.

Climate

Temperature for July in Sienna vary between 10 and 25 °C with an average of 17 °C. Average rainfall for July is 129 mm with 12 rainy days during a month. The weather can be anything from warm and sunny to windy and rainy. Please take into account that the race will be held between 800 and 1200 m a. s. l., so the weather conditions at start and finish can differ a lot and change rapidly.

Visas

According to current regulations, citizens of some countries must obtain a visa in order to enter Poland. Please check the following website for more information:
<https://www.gov.pl/web/diplomacy/visas>
Visas should be applied for at your closest Polish embassy. Please note that conditions of entry may change. All participants are advised to keep themselves updated on the situation by consulting their local Polish embassy.

Transport

No transport offered by the organizers.

Winning time

30-35 minutes for both KM21E classes.

25-28.07.2024

**Sudety
Cup**

sudetycup.pl



Host



Sponsors



Partners



MAZURY CUP...→

2024 BUTRYNY

1/3

CZARNY PIEC

middle distance
28.06.2024

2/3

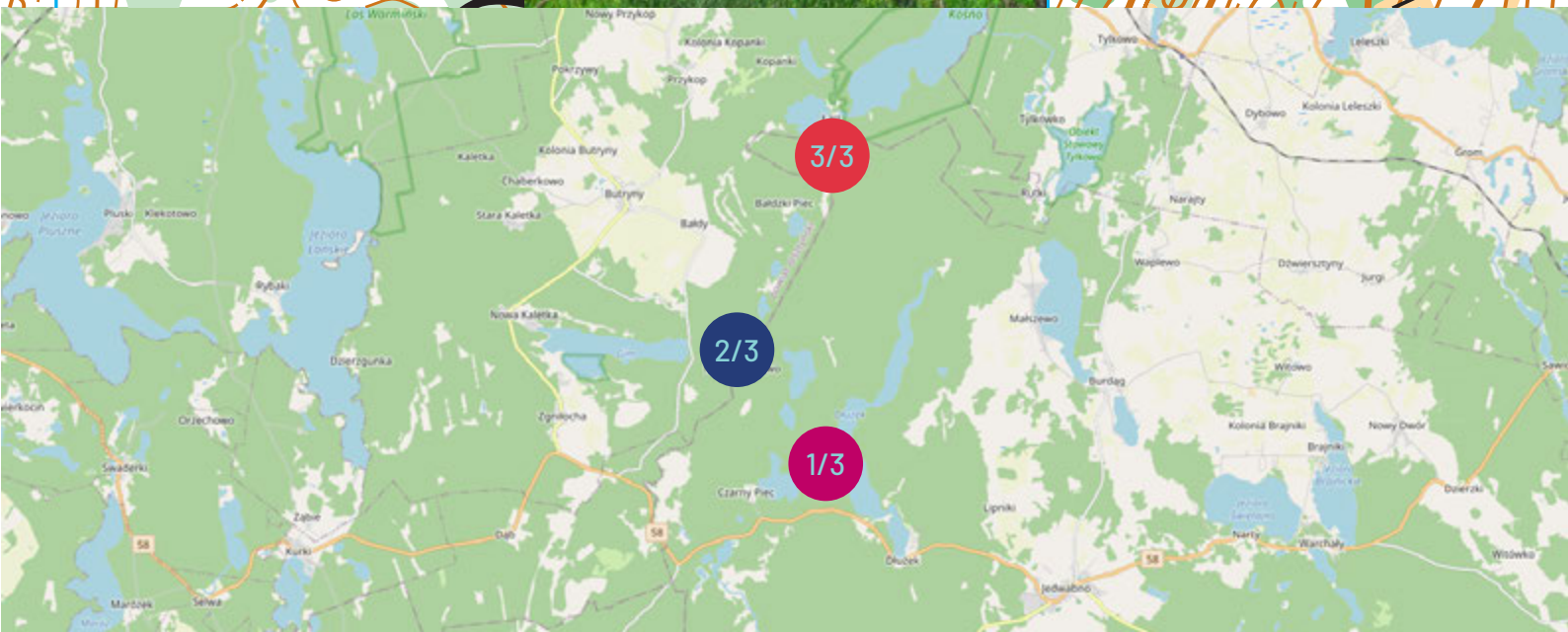
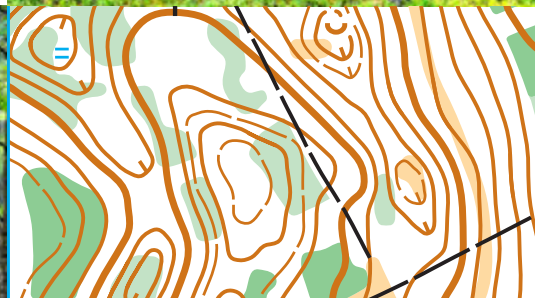
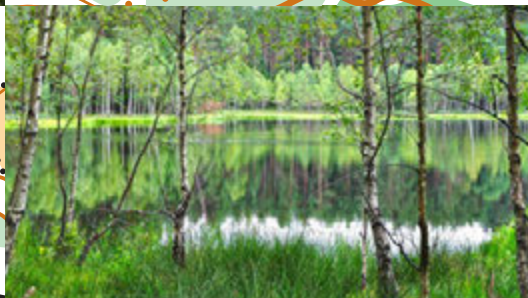
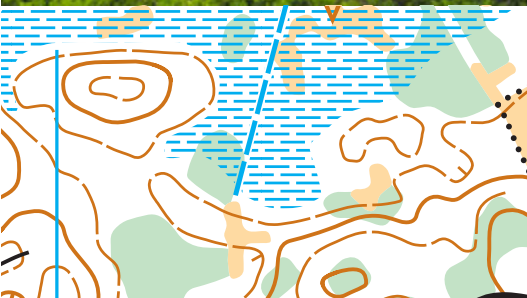
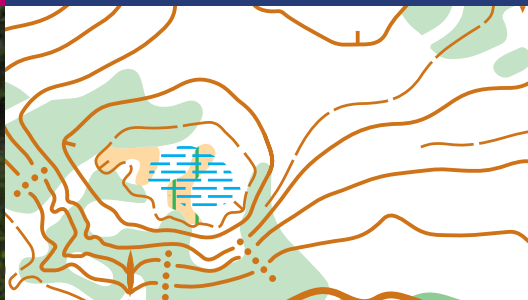
JEZIORO GIM

long distance
29.06.2024

3/3

BAŁDZKI PIEC

chasing start
30.06.2024



28-30.06.2024

MAZURY
CUP...→

mazurycup.pl